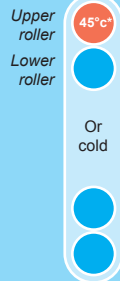


Possible use
of temperature



Use of pressure sensitive films :

- Lamination
- Encapsulation
- Adhesive setting
- Mounting
- Lamination on one side and adhesive setting on the other in one pass

*45°C 113°F presetted temperature for optimised results with cold films

Its upper roller heating system warm up the laminating film up to 45°C (113°F) in order to improve the polymerization process of the film onto the print. This improvement eliminates micro bubbles usually seen when laminated with pressure sensitive laminators without heater elements and earns optimised customer satisfaction.

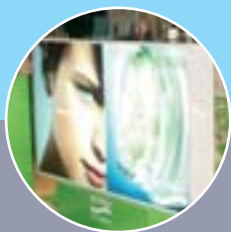
Pivoting feeding tray facilitates easy loading of film rolls.
Connected to a safety device installed in the machine, it provides maximum security to user while loading.



Mistral 1600 HR is a professional and economical pressure sensitive lamination system that can churn out high volumes of finishing jobs with accuracy and remarkable ease.



Optional electrical rewinding system to handle demanding job runs.



Creative applications with Mistral 1600 HR

MISTRAL 1600 HR

Technical Specifications

Max. working width	1600 mm (63")
Length of the roller	1674 mm (66")
Diameter of the heating rollers	114 mm (4 ½")
Max. thickness of print + board	25 mm (1")
Max. thickness of the film	320 microns / side
Upper heating roller	yes - 45°C (113°F)
Digital display of the roller pressure	yes
Upper & lower winding and unwinding spindles	yes
Number of spindles delivered with the machine	4
Max. speed meters/min - (ft/min)	4 - (13)
Reverse operation	yes
Pivoting feeding tray with security protection	yes
Motor control pedal	yes
Emergency stop button	2
Stand mounted on self-locking castors	yes
Electrical print rewinding system	optional
Power of the motor (W)	100
Heating power (W)	3000
Voltage	230V / 50-60Hz single phase
Amperes	14,5 amps
Size of the machine on stand	L194 x D76 x H137 cm - (77"x30"x54")
Weight of the machine kg (Lbs)	275 - (605)
Size of the shipping crate	L225x D105 x H100 cm - (89"x42"x40")
Shipping weight kg (Lbs)	323 - (711)
Made in France	
EC - Certification	



KALA SAS - Parc de l'Ecotay
35 410 Nouvoitou - France

Tel. : +33 (0)2 99 37 64 64 - Fax : +33 (0)2 99 37 64 65
Internet : www.kala.fr - e-mail : info@kala.fr